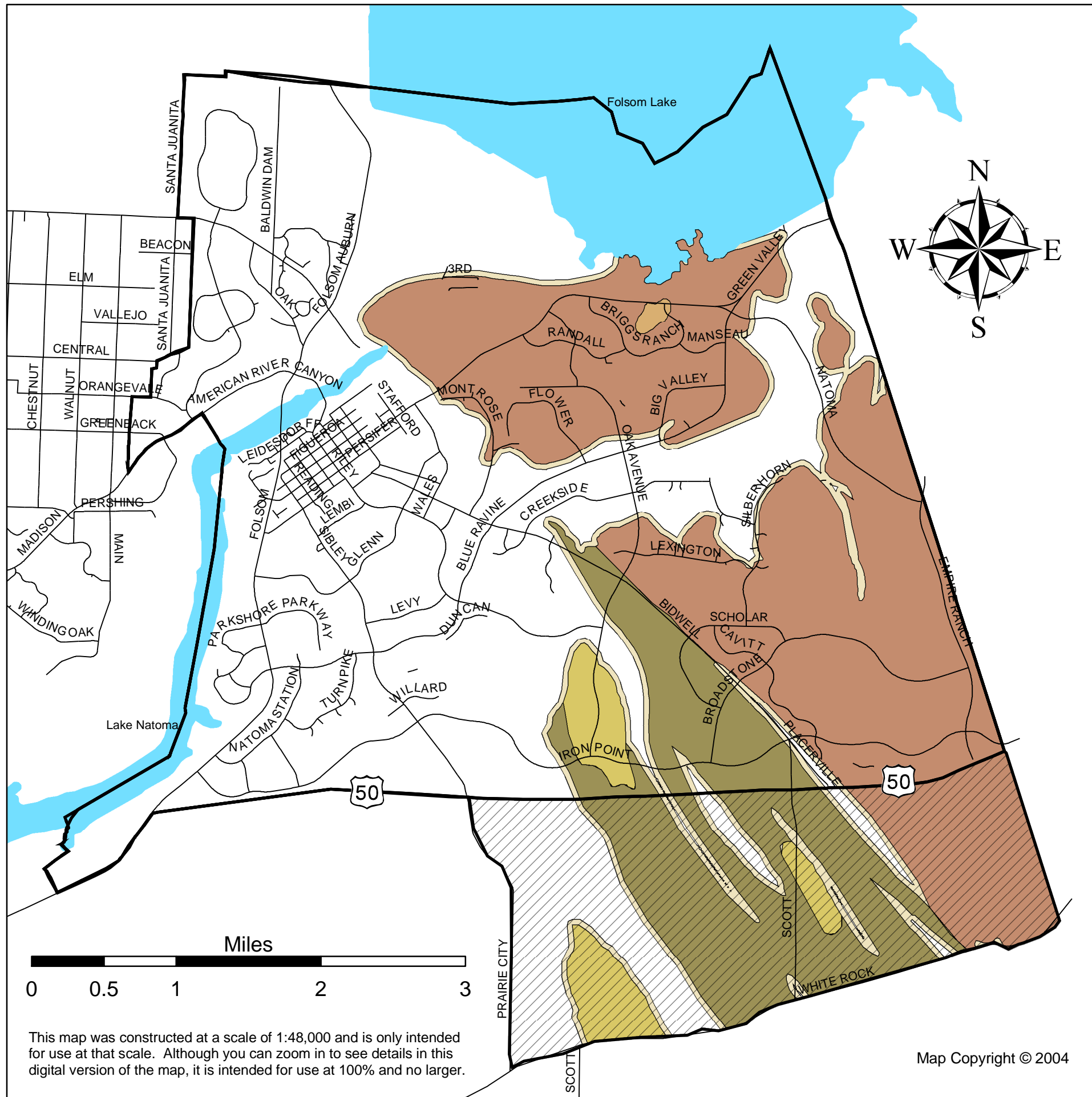


Interim Map of Geologic Units More Likely to Contain Naturally Occurring Asbestos Within the City of Folsom, Sacramento County, California



- Copper Hill Volcanics
- Gabbroic
- Gopher Ridge Volcanics
- Ultramafic
- 200 ft Buffer Zone
- City of Folsom Boundary
- Folsom Sphere of Influence
- Major Roads

Geologic data extracted & digitized from "Loyd, R.C., 1984, Mineral Land Classification of the Folsom 15' Quadrangle Sacramento, El Dorado, Placer, and Amador Counties, California. Division of Mines and Geology, Open-File Report 84-50, Plate 1, Generalized Geologic Map of the Folsom Quadrangle, 1:48,000."

Street centerline and city boundary data obtained from the Sacramento Area Council of Governments Regional GIS Clearing House.

This map indicates geologic units where available information suggests geologic conditions may have been favorable for the formation of natural occurrences of either chrysotile or amphibole-asbestos. It does not indicate whether asbestos minerals are present or absent in bedrock or soil associated with a particular parcel of land. Such a determination requires a detailed site-specific examination of the property and appropriate sampling and analysis. Consequently, no representations or warranties as to the actual presence or absence of natural occurrences of asbestos at specific locations within the area covered by this map can be made. Further, no representations or warranties regarding the accuracy of the data from which these maps were derived are made.

This map was constructed at a scale of 1:48,000 and is only intended for use at that scale. Although you can zoom in to see details in this digital version of the map, it is intended for use at 100% and no larger.